



Building with conscience.

Sto Crack Defense

Fortification layer to minimize surface cracking in stucco wall systems

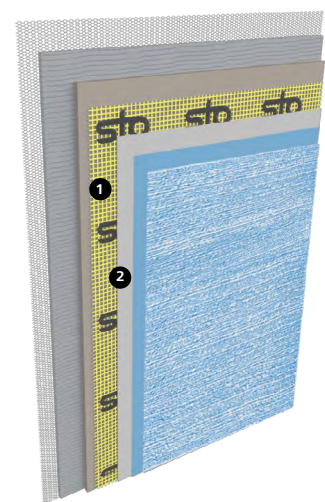
Facades



Sto Crack Defense consists of Sto mesh embedded in Sto polymer reinforced basecoat. This fortification layer is ideal to prevent surface cracking in the finish of new construction, and to repair and refinish existing stucco buildings.



Traditional plaster is a beautiful finish and stucco systems are one of the most popular systems in the United States. What is not popular is the potential for cracking to appear. Sto offers an easy solution to minimize the occurrence of cracks in the surface of the wall system. Sto Crack Defense adds strength and flexibility to the outer wall surface. It consists of a layer of Sto woven glass fiber reinforcing mesh embedded in Sto polymer basecoat. It is an ideal option when specifying a smooth finish or to repair existing stucco walls.



1 Sto Mesh

2 Sto polymer-modified basecoat



A cost-effective crack reducing option for both new and existing construction

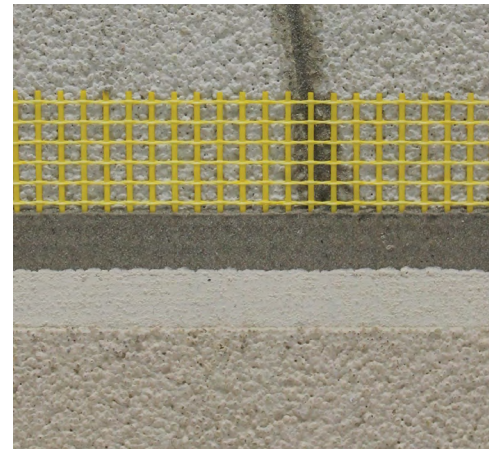
Cracking in stucco is the number one complaint and now there is a simple way to greatly reduce the occurrence of surface cracking. Sto Crack Defense adds minimal cost to the wall system but will save a substantial amount of money in the end by reducing call backs and maintenance/repair costs. Sto Crack Defense is also ideal for restoring existing stucco buildings before they have experienced structural damage: resurfacing the building with Sto Crack Defense will extend the life of the cladding while allowing for a wide variety of aesthetics.

Sto Crack Defense can be added to any of Sto’s fully engineered stucco systems and can extend your system’s warranty by up to 3 years. Sto RFP, a micro-reinforced basecoat with high tensile strength and flexibility is the recommended basecoat option. It does not contain or require any cement and will help in reducing the occurrence of efflorescence. See Crack Defense options in our specifications for alternative basecoat options.

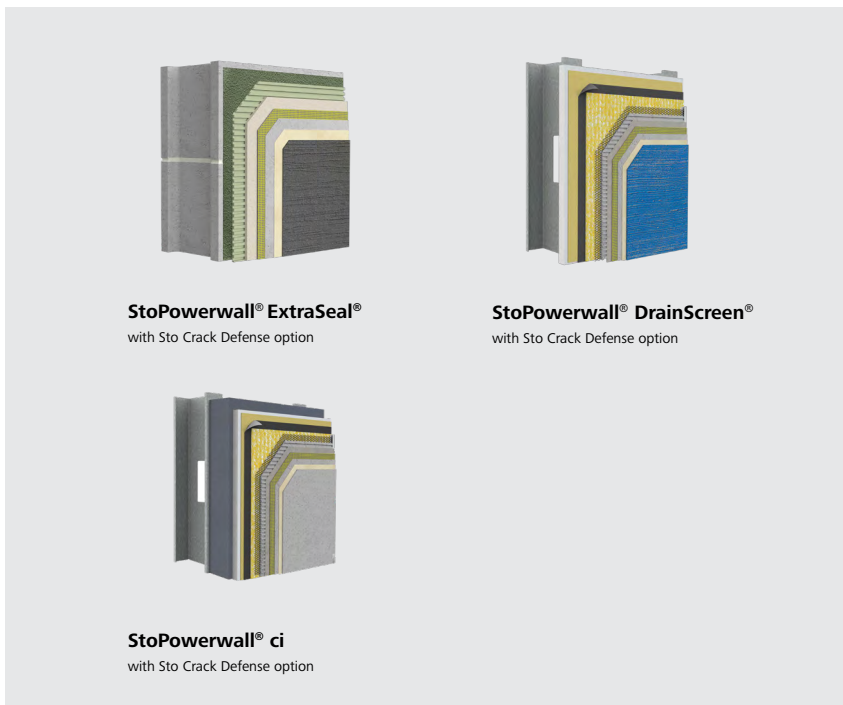
Finish the system with any of Sto’s finishes: Our goal is to give you unmatched creative freedom and the ability to establish the design aesthetic that best illustrates and illuminates your creative vision.

Enjoy a beautiful and longer lasting building with fewer call-backs; do it once, do it right, specify the Sto Crack Defense option.

Features	Benefits
Fiberglass-based mesh	High tensile strength
Alkali-resistant mesh	Compatible with cement-based material
Polymer-modified basecoat	Excellent adhesion; increased durability and freeze/thaw resistance
Mesh embedded in basecoat	Flexibility and strength to reduce surface cracks Reduced maintenance and call-backs



Crack Defense as a repair method: Sto mesh embedded in Sto RFP, finished with StoPrime® and StoIt® 1.0



Sto Americas

Sto Corp.
 3800 Camp Creek Pkwy
 Building 1400, Suite 120
 Atlanta, GA 30331
 USA
 Phone 1-800-221-2397
www.stocorp.com

ATTENTION

Sto products are intended for use by qualified professional contractors, not consumers, as a component of a larger construction assembly as specified by a qualified design professional, general contractor or builder. They should be installed in accordance with those specifications and Sto’s instructions. Sto Corp. disclaims all, and assumes no, liability for on-site inspections, for its products applied improperly, or by unqualified persons or entities, or as part of an improperly designed or constructed building, for the nonperformance of adjacent building components or assemblies, or for other construction activities beyond Sto’s control. Improper use of Sto products or use as part of an improperly designed or constructed larger assembly or building may result in serious damage to this product, and to the structure of the building or its components. **STO CORP. DISCLAIMS ALL WARRANTIES EXPRESSED OR IMPLIED EXCEPT FOR EXPLICIT LIMITED WRITTEN WARRANTIES ISSUED TO AND ACCEPTED BY BUILDING OWNERS IN ACCORDANCE WITH STO’S WARRANTY PROGRAMS WHICH ARE SUBJECT TO CHANGE FROM TIME TO TIME.** For the fullest, most current information on proper application, clean-up, mixing and other specifications and warranties, cautions and disclaimers, please refer to the Sto Corp. website, www.stocorp.com.